

POWER UNITS & POWER PACKS

POWER PACKS AC/DC



- AC/DC MOTORS
- ADJUSTABLE RELIEF
- SAE-06 PORTS
- MANY PUMPS & TANK SIZE OFFERED
- CSA CERTIFIED AVAILABLE



POWER UNITS

WHATEVER YOUR REQUIREMENTS, OUR EXPERIENCED TEAM WILL BE ABLE TO DESIGN THE UNIQUE HYDRAULIC SOLUTION THAT MEETS YOUR INDIVIDUAL SPECIFICATIONS. PROJECT APPRAISAL, INVENTORY REQUEST, AND ORDERS ARE ACCESSIBLE TO AFFILIATED DISTRIBUTORS.



HC Hydro Custom

POWER PACKS

HC Hydro Custom

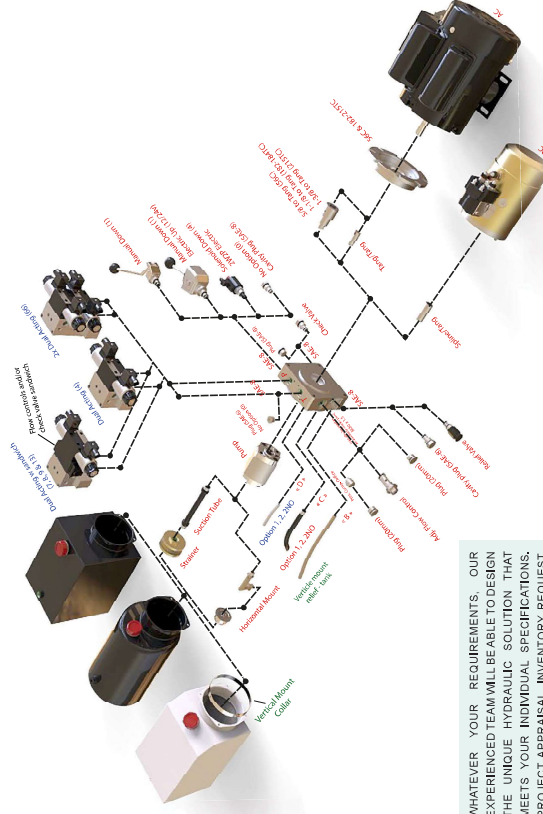
Our power units follow the same vigorous production and assembly processes as the rest of our products. The Hydro Custom power units are used in various applications :

- Car Lift (ETL Certified)
- Snow Plow
- Dock Leveler
- Lift Table
- Scissor Lift
- Tail Gate
- Fork Lift
- Tipper Trailer
- Dump Trailer
- Garbage Truck
- RV
- Wheel Chair and Medical

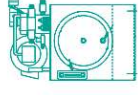
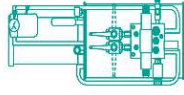


FEATURES AND BENEFITS

- Choice of configurations of multiple components such as pumps, valves, motors and tanks.
- Experienced advisers in hydraulic circuit conception that will help you with the design of powers units according to your needs and requirements.
- Power units can be fitted with blocks manifold designed to your specifications and manufactured in our workshops.
- Mounting and testing of power units in a clean environment and without contamination, according to procedures established by highly qualified technicians.
- Manufacturing customized solutions or series are possible taking into consideration the time of execution, the amount and the budgetary.
- Price constraints.
- 3D drawings, hydraulic and electrical plans and reports of tests (flow, pressure, speed, etc.) upon request.
- Variety of standard power units distributed in our three warehouses across North America.
- Several points of service in North America with hydraulic spare parts.
- Well studied Quality/Price Ratio in order to provide you with the best possible offer.



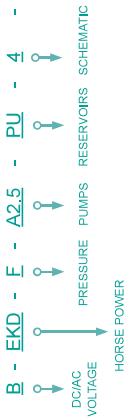
WHATEVER YOUR REQUIREMENTS, OUR EXPERIENCED TEAM WILL BE ABLE TO DESIGN THE UNIQUE HYDRAULIC SOLUTION THAT MEETS YOUR INDIVIDUAL SPECIFICATIONS. PROJECT APPRAISAL, INVENTORY REQUEST, AND ORDERS ARE ACCESSIBLE TO AFFILIATED DISTRIBUTORS.



POWER PACKS

MODEL CODE

EXAMPLE



DC MOTORS 2500 RPM

CODE	VOLTAGE & HORSEPOWER
1W2W	12V, 2.5 HP
2A3W	24V, 2.5 HP

AC MOTORS 1800 RPM

VOLTAGE	CODE	PRESSURE
110/220V, 1PH, CSA	X	NO RELIEF
24V, 2.5 HP	D	145-1500 PSI
208-230/460V, 3 PH	F	590-2600 PSI
	H	1150-2600 PSI

CODE	HORSEPOWER
CKD	0.5
DKD	0.75
EKO	1
EKBT	1 HP + BUTTON & CABLE*
EKBD	1 HP + TOGGLE & CABLE*
FKD	1.5
GKD	2
HKO	3
JKD	5

*AVAILABLE FOR 110/220V MOTORS ONLY

PRESSURE LIMITATION (PSI) MOTOR & PUMP COMBINATION

HP	PUMP CODE									
	0.8	1.2	1.6	2.1	2.5	3.2	3.7	4.2	5.0	6.0
1/2	2250	1482	1112	828	695	537	465	340	283	212
3/4	3374	2223	1688	1242	1043	806	697	510	425	319
1	4469	2965	2223	1656	1391	1074	929	690	567	425
1.1/2	6749	4447	3335	2483	2086	1611	1384	1214	1020	850
2	8668	5929	4447	3311	2781	2149	1859	1619	1380	1133
2.5	11248	7412	5559	4139	3477	2686	2323	2023	1700	1416
3	13668	8984	6670	4987	4172	3223	2787	2428	2040	1700
5	22486	14623	11117	8218	6855	5371	4645	4047	3389	2833

12VDC UNITS GPM FLOW CHART

PSI	PUMP (CC)									
	0.8	1.2	1.6	2.1	2.5	3.2	4.2	5.0	6.0	8.0
0	0.99	1.50	1.93	2.51	2.71	3.24	3.24	4.25		
500	0.87	1.33	1.36	1.88	2.26	2.71	2.91			
1000	0.85	1.18	1.12	1.65	1.88	2.31	2.14			
1500	0.77	1.12	1.06	1.48	1.72	1.78	1.59			
2000	0.73	1.04	0.95	1.35	1.53	1.65	1.19			
2500	0.69	0.95	0.9	1.12	1.39	1.45	0.9			
3000	0.63	0.71	0.79	1.03	1.22	1.32	0.85			

WARNING! MORE THAN 250 AMPERES

24VDC UNITS GPM FLOW CHART

PSI	PUMP (CC)									
	0.8	1.2	1.6	2.1	2.5	3.2	4.2	5.0	6.0	8.0
0	1.12	1.74	2.05	2.38	2.71	3.31	3.43			
500	0.90	1.34	1.62	1.78	2.11	2.54	2.62			
1000	0.79	1.19	1.41	1.62	1.72	2.01	2.18			
1500	0.73	1.04	1.21	1.37	1.40	1.45	1.78			
2000	0.66	0.95	1.12	1.19	1.22	1.32	1.59			
2500	0.63	0.89	0.99	1.06	1.16	1.21	1.39			
3000	0.59	0.79	0.94	0.92	1.11	1.20	1.32			

POWER PACKS

HC Hydro Custom

RESERVOIRS
BREATHER WITH DIPSTICK INCLUDED

SCHEMATIC
RELIEF VALVE INCLUDED UNLESS SPECIFIED

PLASTIC HORIZONTAL		DIMENSIONS	
CODE	GALLONS	USABLE	
PR	1.0	0.7	7.1 SQ. X 7.8 LG.
PS	1.3	1.2	7.1 SQ. X 11.4 LG.
PT	1.6	1.6	7.1 SQ. X 13.2 LG.
PU	2.1	2.1	7.1 SQ. X 17.3 LG.
PV	2.6	2.6	7.1 SQ. X 20.9 LG.
PW	3.2	3.1	7.1 SQ. X 21.6 LG.

ROUND STEEL HORIZONTAL		DIMENSIONS	
CODE	GALLONS	USABLE	
RY	0.4	0.28	4.75 DIA. X 6.3 LG.
RZ	0.53	0.4	4.75 DIA. X 8.5 LG.
RA	1	1.5	7.0 DIA X 7.8 LG.
RB	1.3	2.1	7.0 DIA X 9.8 LG.
RC	2.1	2.6	7.0 DIA X 14.5 LG.
RD	2.8	2.7	7.0 DIA X 17.3 LG.

SQUARE STEEL HORIZONTAL		DIMENSIONS	
CODE	GALLONS	USABLE	
SD	2.6	2.2	7.7W X 8.25H X 10.2 LG.
SE	3.2	2.6	7.7W X 8.25H X 11.8 LG.
SF	4	3.5	7.7W X 8.25H X 16.1 LG.
SH	5.3	4.7	7.7W X 8.25H X 21 LG.
SJ	6.8	6.2	7.7W X 8.25H X 27.8 LG.

PLASTIC VERTICAL		DIMENSIONS	
CODE	GALLONS	USABLE	
GR	1.0	0.79	7.1 SQ. X 7.9 LG.
GS	1.3	1.3	7.1 SQ. X 11.4 LG.
GT	1.6	1.5	7.1 SQ. X 13.2 LG.
GJ	2.1	2.1	7.1 SQ. X 17.3 LG.
GV	2.6	2.6	7.1 SQ. X 20.9 LG.
GW	3.2	2.7	7.1 SQ. X 21.6 LG.

ROUND STEEL VERTICAL		DIMENSIONS	
CODE	GALLONS	USABLE	
TK	0.8	0.5	7.0 DIA X 7.8 LG.
TL	1.3	1.2	7.0 DIA X 11.8 LG.
TM	2.6	2.1	7.0 DIA X 17.3 LG.
TN	3.2	2.7	7.0 DIA X 21.2 LG.

SQUARE STEEL VERTICAL		DIMENSIONS	
CODE	GALLONS	USABLE	
UE	3.2	2.9	7.7W X 8.25H X 11.8 LG.
UP	4.2	3.9	7.1 SQ. X 23.2 LG.
UQ	5.5	5.1	7.1 SQ. X 28.1 LG.
UR	6.6	2.1	11 X 13.5 X 11.8 LG.
U4	9.2	2.7	11 X 13.5 X 18 LG.

POWER PACKS

HC Hydro Custom

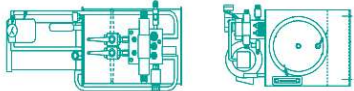
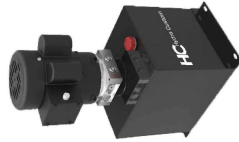


CODE	DESCRIPTION
OMIT	NO REMOTE
AR	REMOTE + 10FT CABLE

DC MOTORS ONLY

PUMPS ALUMINIUM GEAR PUMP

CODE	MAX PSI		MAX RPM		FLOW GPM	
	CONT.	INT.	CONT.	INT.	AC UNIT	DC UNIT
A0.8	2900	3625	2000	4000	0.32	
A1.2	2900	3625	2000	4000	0.49	
A1.6	2900	3625	2000	4000	0.66	
A2.1	2900	3625	2000	4000	0.88	
A2.5	2900	3625	2000	4000	1.05	SEE CHARTS
A3.2	2900	3625	2000	4000	1.36	SEE CHARTS
A3.7	2600	3335	2000	3600	1.57	SEE CHARTS
A4.2	2600	3335	2000	3600	1.80	SEE CHARTS
A5	2030	2600	1500	3000	2.14	SEE CHARTS
A6	2030	2600	1500	3000	2.57	SEE CHARTS
A8	1450	2030	1500	3000	3.43	SEE CHARTS



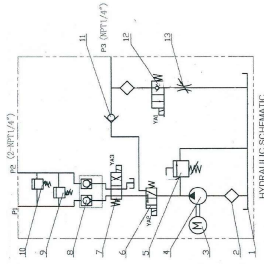
POWER PACKS



SNOW PLOW UNITS

UNIT PART NUMBER: 1W2W-F2.5ZR14A
REMOTE PART NUMBER: SP4AF1

- 12V DC POWER UNIT FOR SNOW PLOW APPLICATION
- CUSHION VALVE TO ABSORB SHOCKS ON LEFT-RIGHT MOVEMENT
- MADE FOR 3 SINGLE ACTING CYLINDERS
- 1/2 GALLONS TANK
- SAE-06 PORTS
- 2 AXIS JOYSTICK (LEFT, RIGHT, UP & DOWN)
- ROCKER SWITCH WITH LIGHT TO ACTIVATE FLOAT POSITION
- 10 FOOT CABLE
- DIMENSIONS OF 15" X 10" X 6 3/4"



DIRECT MOUNT "PUMP-MOTOR ASSEMBLIES"



MODEL CODE

EXAMPLE
DM56CS4C - 4PS2.8



PUMP : 4PS2.5 (GEAR TYPE, 2.5CC)

MOTOR : DM56CS4C (HP, 110/220V)

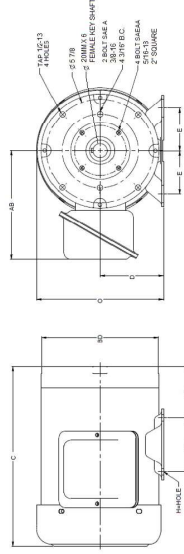
MOTORS - TEFC - 1800 RPM

HP	PART NUMBERS		FRAME	PUMP SIDE FLANGE & SHAFT	GEAR TYPE		VANE TYPE		
	110/220V SINGLE PHASE	208-230/480V THREE PHASE			CODE	GPM	MODEL	GPM	MODEL
0.50	DM56C12S4CF	-	-	-	4PS1.4	0.6	2ZS1	1.5	V10 PAGE 71
0.75	DM56C12S4CF	-	-	-	4PS2.1	0.8	2ZS2	3.0	
1	DM56C1S4CF	-	56C	SAE A-2B FLANGE AND SAE A-4B FLANGE	4FS2.8	1.1	2ZS3	4.5	
1.5	DM56C1S4CF	-	-	-	4FS3.5	1.4	2ZS4	6.0	
2	DM56C2S4CF	-	-	-	2FS4.5	1.8	2ZS5	7.5	
3	DM56C3S4CF	-	-	-	2FS6.5	2.6	2ZS6	9.0	
5	-	DM215TC3P4AF	-	-	2FS8.3	3.3	2ZS7	10.5	
7.5	-	DM215TC5M4DF	-	-	2PS11.3	4.5	2ZS8	12.0	
10	-	DM215TC10M4DF	215TC	SAE A-2B FLANGE	2PS13.8	5.5	2ZS9	13.5	
15	-	DM215TC15M4DF	-	-	2PS16	6.3	2ZS10	15.0	
20	-	DM215TC20M4DF	-	-	2ZS12	18.0	2ZS11	16.5	
					2ZS13	19.5	2ZS13	19.5	

DIRECT MOUNT "PUMP-MOTOR ASSEMBLIES"

FEATURES AND BENEFITS

- VERY ECONOMICAL & COMPACT DESIGN
- DIRECTLY ON ELECTRIC MOTORS.
- DIRECT MOUNT" MOTOR CAN BE ORDERED SEPARATELY



- ALSO AVAILABLE
- HYDRAULIC CIRCUIT DIRECTLY MOUNTED ON THE PUMP
 - VERY COMPACT DESIGN, LESS PIPING
 - MANY OPTIONS

