

FLOW CONTROLS VALVES

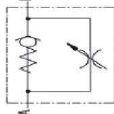


IN-LINE FLOW CONTROL VALVES

FLOW CONTROLS

- CONTROL FLOW IN ONE DIRECTION

PART NO	PORTS	MAX PSI	MAX GPM
FC-02	1/4 NPT		5
FC-03	3/8 NPT	5000	8
FC-04	1/2 NPT		15
FRU990-03N	1/2 NPT		13
FC-06	3/4 NPT	3000	25



FLOW CONTROL, PRESSURE COMPENSATED

- CONTROL FLOW IN ONE DIRECTION

PART NO	PORTS	MAX PSI	MAX GPM
FRC90-01-SAE6	SAE-06	3625	4.5
FRC90-02-SAE8	SAE-08		

NEEDLE VALVES

- CONTROL FLOW IN BOTH DIRECTIONS

PART NO	PORTS	MAX PSI	MAX GPM
NV-02	1/4 NPT		5
NV-03	3/8 NPT	5000	8
NV-04	1/2 NPT		15
FRB-90-03N	1/2 NPT		13

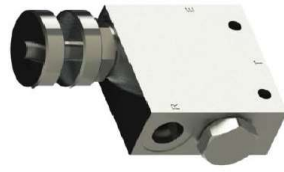
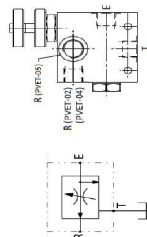


3 WAYS PRIORITY VALVE, EXCESS TO TANK, WITH KNOB

- 3000 PSI MAXIMUM PRESSURE

- PRESSURE COMPENSATED

PART NO	MAX GPM		PORTS
	INLET	CONTROL	
PVET-02	10.5	6.5	SAE-08
PVET-04	39	23.5	SAE-12
PVET-05	74	50	SAE-16



FLOW CONTROLS VALVES



3 WAYS PRIORITY VALVE, EXCESS TO TANK, WITH LEVER

- 3000 PSI MAXIMUM PRESSURE

- 30 GPM MAXIMUM FLOW

PART NO	EQUIVALENT	PORTS	CONTROL FLOW
W-1950-8	FC51-1/2-37	1/2 NPT	0 - 8 GPM
W-1908-8	FC51-8	SAE-08	
W-1950-16	FC51-1/2	1/2 NPT	0 - 16 GPM
W-1975-30	FC51-3/4	3/4 NPT	0 - 30 GPM
W-1912-30	FC51-1/2	SAE-1/2	

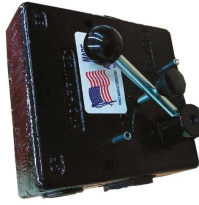


MODEL WITH RELIEF			
PART NO	EQUIVALENT	PORTS	CONTROL FLOW
WR-1937-8	FCR51-3/8	3/8 NPT	0 - 8 GPM
WR-1950-16	FCR51-1/2	1/2 NPT	0 - 16 GPM
WR-1975-30	FCR51-3/4	3/4 NPT	0 - 30 GPM
WR-1912-30	FCR51-1/2	SAE-1/2	

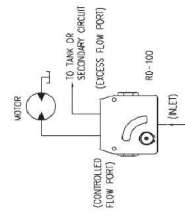


W, WR & FC MODELS

PART NO	CONTROL FLOW	
	SIDE PORTS	TOP PORTED
RD-1937-8	RD-137-8	3/8 NPT
RD-1950-8	RD-150-8	1/2 NPT
RD-1908-8	RD-108-8	SAE-08
RD-1950-16	RD-150-16	1/2 NPT
RD-1975-16	RD-175-16	3/4 NPT
RD-1975-30	RD-175-30	3/4 NPT
RD-1912-30	RD-112-30	SAE-1/2



RD-1950



FLOW CONTROLS VALVES



3 WAYS PRIORITY VALVE, EXCESS TO TANK, WITH LEVER

- 3000 PSI MAXIMUM PRESSURE

- 30 GPM MAXIMUM FLOW

PART NO	EQUIVALENT	PORTS	CONTROL FLOW
W-1950-8	FC51-1/2-37	1/2 NPT	0 - 8 GPM
W-1908-8	FC51-8	SAE-08	
W-1950-16	FC51-1/2	1/2 NPT	0 - 16 GPM
W-1975-30	FC51-3/4	3/4 NPT	0 - 30 GPM
W-1912-30	FC51-1/2	SAE-1/2	

MODEL WITH RELIEF			
PART NO	EQUIVALENT	PORTS	CONTROL FLOW
WR-1937-8	FCR51-3/8	3/8 NPT	0 - 8 GPM
WR-1950-16	FCR51-1/2	1/2 NPT	0 - 16 GPM
WR-1975-30	FCR51-3/4	3/4 NPT	0 - 30 GPM
WR-1912-30	FCR51-1/2	SAE-1/2	

PART NO	CONTROL FLOW	
	SIDE PORTS	TOP PORTED
RD-1937-8	RD-137-8	3/8 NPT
RD-1950-8	RD-150-8	1/2 NPT
RD-1908-8	RD-108-8	SAE-08
RD-1950-16	RD-150-16	1/2 NPT
RD-1975-16	RD-175-16	3/4 NPT
RD-1975-30	RD-175-30	3/4 NPT
RD-1912-30	RD-112-30	SAE-1/2

MODEL WITH RELIEF		
SIDE PORTS	PART NO	CONTROL FLOW
RDRS-1950-16	RDRS-150-16	1/2 NPT
RDRS-1975-30	RDRS-175-30	3/4 NPT
		0 - 16 GPM
		0 - 30 GPM