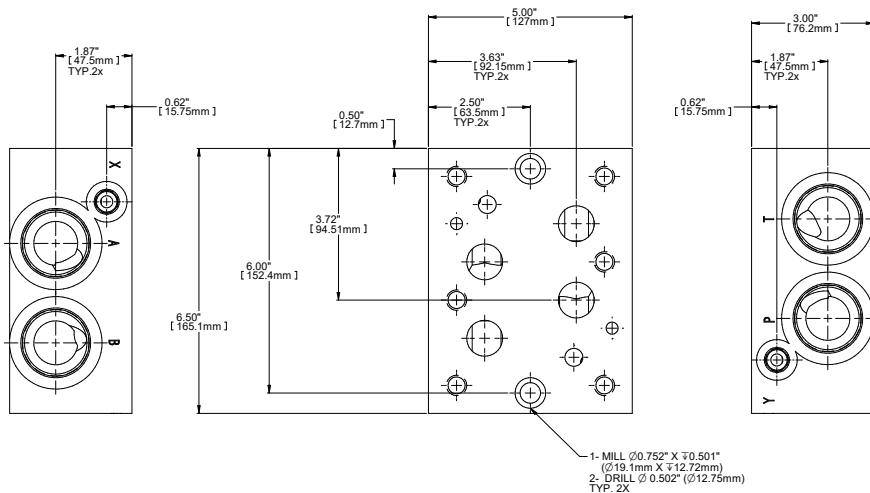


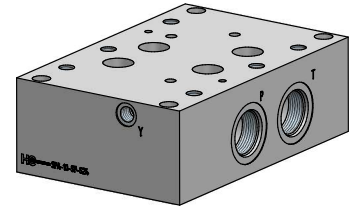
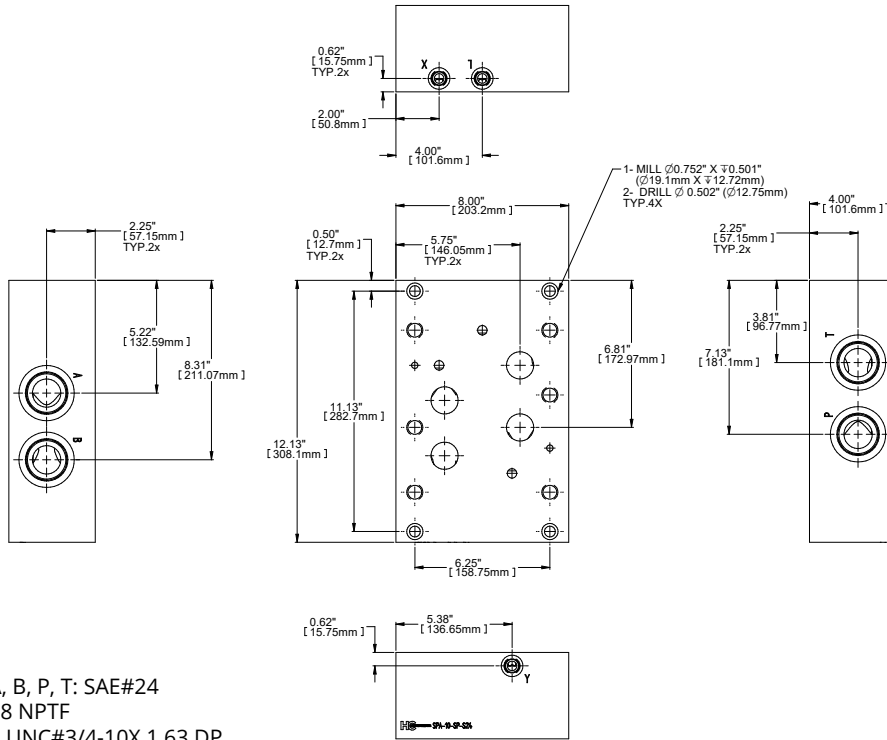
NOTES:
 PORT SIZE A, B, P, T: SAE#16
 X, Y: SAE#6
 VALVE MTG: UNC#1/4-20X 0.50 DP
 VALVE MTG: UNC#3/8-16X 0.75 DP

MATERIAL: ALUMINIUM 6061-T6
 YIELD RESISTANCE: 40000 PSI
 ULTIMATE RESISTANCE: 45000 PSI



NOTES:
 PORT SIZE A, B, P, T: SAE#20
 X, Y: SAE#6
 VALVE MTG: UNC#1/2-13X 1.19 DP

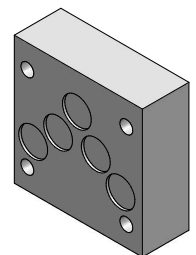
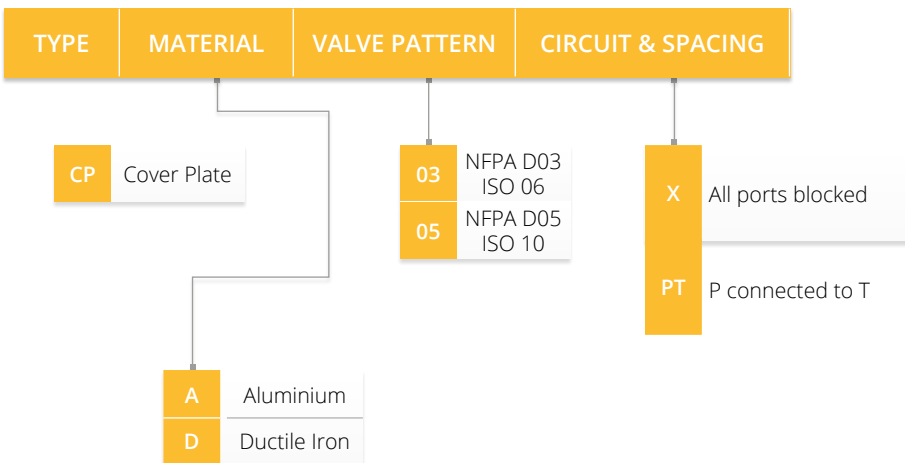
MATERIAL: ALUMINIUM 6061-T6
 YIELD RESISTANCE: 40000 PSI
 ULTIMATE RESISTANCE: 45000 PSI



NOTES:
 PORT SIZE A, B, P, T: SAE#24
 X, Y, L: 3/8-18 NPTF
 VALVE MTG: UNC#3/4-10X 1.63 DP

MATERIAL: ALUMINIUM 6061-T6
 YIELD RESISTANCE: 40000 PSI
 ULTIMATE RESISTANCE: 45000 PSI

Part Number System



UNC MOUNTING KIT INCLUDES
 4 - SOCKET HEAD CAP SCREWS
 0 - RINGS